

MINI ENVIRONMENT

Series 5503

High quality, 3.75 cu. ft. (106 l) acrylic chambers that can be configured as a GLOVE BOX, NITROGEN DRY BOX, DESICCATOR or CONTROLLED HUMIDITY and/or TEMPERATURE ENVIRONMENT. Use for storage, conditioning, testing, handling and fabrication in electronic, electrostatic, biomedical, pharmaceutical, R&D plus other applications.

Features:

- 3.75 ft³ (106 l) working space
- ¼" (6mm) clear acrylic, PS30 welded seams
- 12" x 12" (30.5x30.5cm) access opening
- ½" (12mm) door with ½-turn latch
- Available with or without 6" (150mm) glove ports
- Humidity & temperature control packages
- Portable and stackable
- Custom configurations



Available Humidity/Temperature Control Packages:

Series 5503 Chambers may be ordered as a freestanding enclosure, equipped with customer selected controllers and operating systems or with one of the following prepackaged systems. Contact ETS for additional information.

Model 5503-00: Enclosure only without glove ports

Model 5503-11: Enclosure only with glove ports

Pkg. A: Single point (5% RH, N₂, dry air) controlled low humidity system

Pkg. B: Adjustable dehumidification control system (desiccant)

Pkg. C: Adjustable humidification system (ultrasonic)

Pkg. D: Full range humidity control system (<5 - >98%)

Pkg. E: Full range humidity control system plus elevated temp (135°/55°C max)

Pkg. F: Complete humidity and temperature (13°F/7°C below ambient to 135°/55°C max) control system



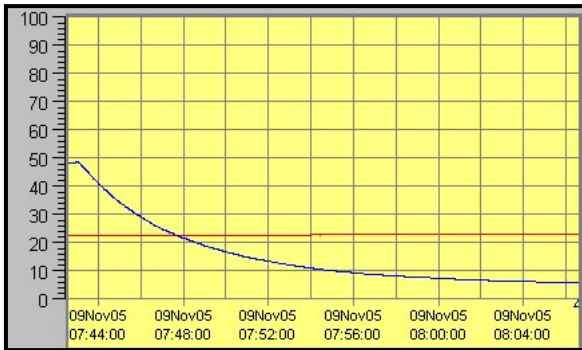
electro-tech systems, inc.

www.electrotechsystems.com

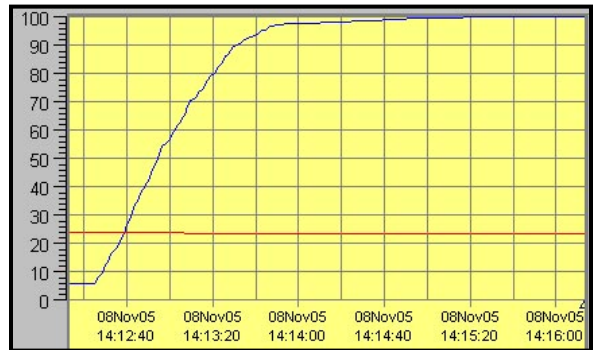
3101 Mt. Carmel Avenue, Glenside, PA 19038 • Tel: (215) 887-2196 • Fax: (215) 887-0131

Performance Characteristics:

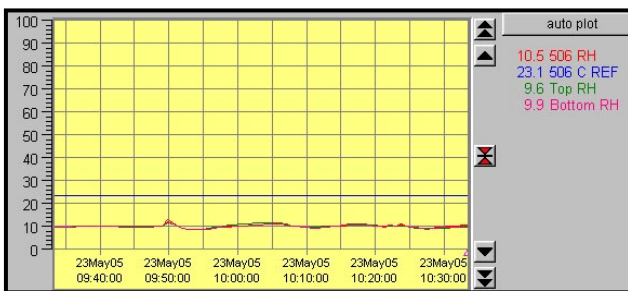
The ability of the chamber to reach and then hold a given humidity level along with humidity gradients is a function of the chamber (size, configuration etc.), temperature, and the operating systems and controllers used. The following charts show the time typically required to decrease and increase humidity (Blue = RH, Red = T °C) plus humidity gradients using an ETS Model 5200-231-241 Controller with CALCOMMS software in conjunction with a Model 5461 Desiccant/Pump Dehumidification System and a Model 5462 Ultrasonic Humidification System (Option Package D).



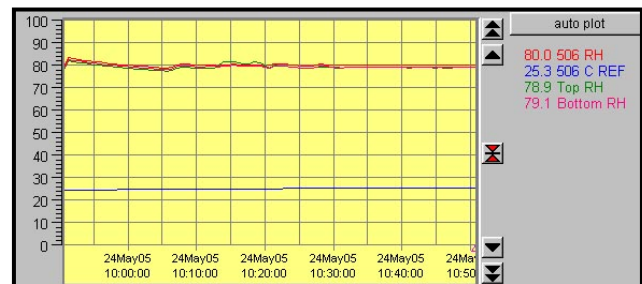
Rate of humidity decrease



Rate of humidity increase



Low humidity gradient



High humidity gradient

Refer to ETS Series 5000, 5400 and 5500 brochures for additional controller, operating systems and chamber information.

Specifications:

Material:

¼" (6mm) clear acrylic
3/8" (9mm) left end cap

Construction:

Wrapped, PS30 welded seams

Door: (left side)

½" (12mm) clear acrylic with ½-turn latch

Seal: ¼" (6mm) Poron, non-setting gasket

Gloves: (when configured)

.018" (0.5mm) latex, 6" (14.3cm) ports

Operating Range:

Humidity: <1 – 100% RH

Temperature: <32 – 135 °F (0-55 °C)

Access Ports: (left side)

2x¼" (6mm) hose barbs

1x1" (25.4mm) Hose barb

1x½" (12mm) compression fitting

1x1½" (31.4mm) cable pass through

Dimensions: 24"Wx18"Dx15"H (61x46x38 cm)

Weight: 27 lbs (12.3 kg)

Warranty: One (1) year

Specifications subject to change without notice.